

TOPBiHiKu6

N-type TOPCon Bifacial 182 Cell Modules

Module power
up to

570W

Module efficiency
up to

22.1%

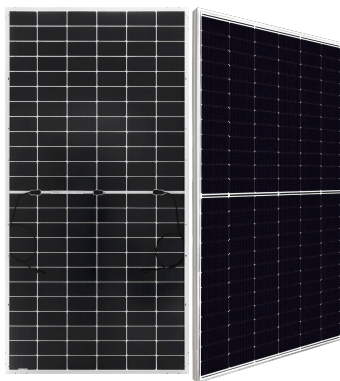
1st year power
degradation \leq

1%

Power Performance
Warranty

30 Years

Canadian Solar TOPCon Bifacial 182 Cell Modules



555~570W

Bifacial CS6W-TB-AG

2278 x 1134 x 30 mm

FEATURES



Higher Power

Module power up to 570W
Module efficiency up to 22.1%



Less Degradation

No Boron-oxygen LID (Light Induced Degradation)
Anti PID (Potential Induced Degradation)



Lower Temperature Coefficient

Lower temperature coefficient (Pmax): -0.30%/°C
Increase energy yield in hot climate



16BB Cell Technology

Minimize micro-crack impacts
Reduce resistance loss, and improve current collection



Enhanced Mechanical Loads

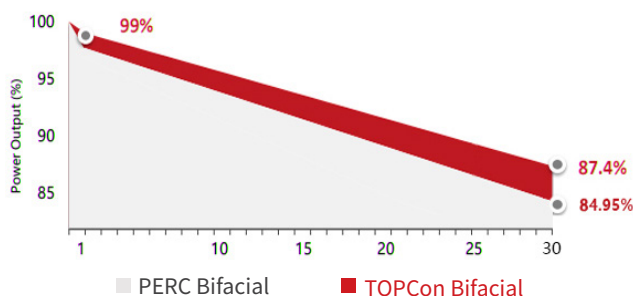
Snow load up to 5,400Pa
Wind load up to 2,400Pa



High Investment IRR

More energy yield
Less BOS and lower LCOE

MODULE WARRANTY



12
years*

Enhanced product warranty on materials and workmanship

30
years*

Linear power performance warranty

*1st year power degradation no more than 1%
subsequent annual power degradation no more than 0.4%

MANAGEMENT SYSTEM CERTIFICATES

ISO 9001:2015
Quality management system

ISO 14001:2015
Standards for environmental management system

ISO 45001: 2018
International standards for occupational health & safety

IEC 62941: 2019
Quality system for PV module manufacturing

PRODUCT CERTIFICATES

IEC 61215 / IEC 61730 / CE (expected in Dec.2022)
UL 61730 / IEC 61701 / IEC 62716 (expected in Dec.2022)